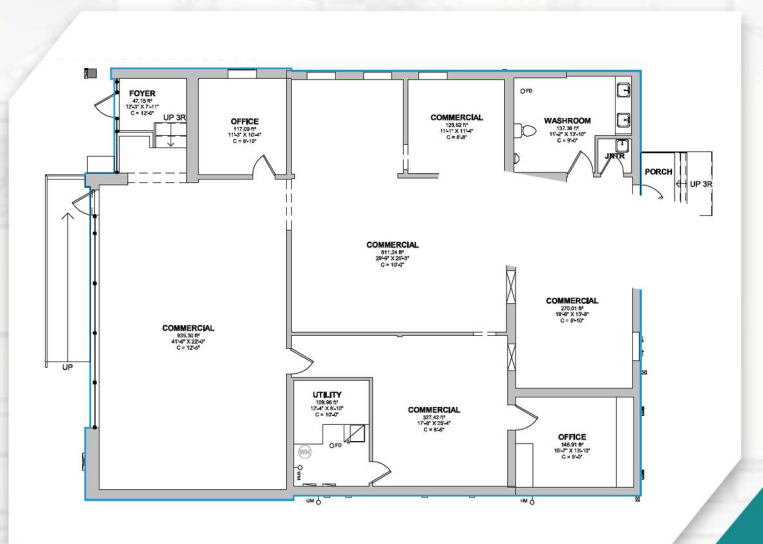




SightPlan 3D

CAD Solutions For Architects

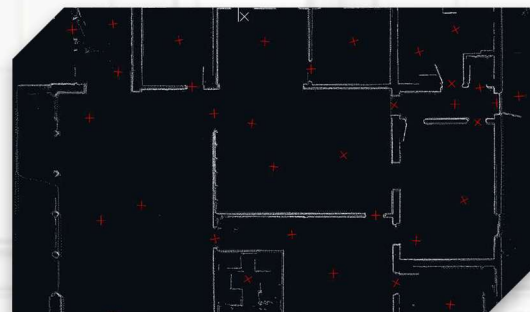


SightPlan 3D offers a variety of advanced architecture solutions designed to enhance spatial visualization and project planning. With its immersive virtual walkthroughs, detailed floor plans and accurate measurements, SightPlan 3D provides architects, designers and contractors with precise tools to speed up their CAD-based workflows.

Advanced Drawing Package

This package pairs SightPlan 3D's Premium virtual walkthrough with a drafted floor plan (DWG), a detailed plotted drawing package and lidar point cloud data for all floors (DXF) to provide complete documentation of your property.

- SightGuide 3D Premium - 3D Virtual Walkthrough
- Plotted Drawing Package (PDF):
 - As-Built Floor Plans with MEP (surface level) details
 - Dimension drawing plotted on the sheet (DWG export)
 - Point cloud (plotted on sheet):
 - Horizontal
 - Vertical (if provided)
- Drafted Floor Plan (DWG)
- Lidar point cloud data on all floors (DXF)



The Advanced Drawing Package has a range of Add-ons available that can be included for an additional cost. When ordered, these Add-ons will automatically be added to the Plotted PDF Drawing Package. They offer the flexibility to choose exactly what set of deliverables is needed for your project.



Add-ons Available:

- Roof Plan
- Exterior Elevations
- Reflected Ceiling Plan
- 3D Model

Contact
Us

561-489-4500

info@sightplan3d.com

www.sightplan3d.com



ADD-ONS

SightPlan 3D Add-ons must be ordered with a SightPlan 3D Virtual Walkthrough or Advanced Drawing Package, and are included in the plotted PDF when paired with the latter. When paired with an SightPlan 3D Premium or Standard they will be provided in CAD format only. They offer flexible, project-ready deliverables-perfect for fast-tracking drafts, designs and development.

CAD Floor Plan Add-on

- Drafted floor plan (DWG)
 - LOD 200: Interior wall thicknesses are set to North American standards, and exterior spaces are included (patios, porches, etc.)
 - AIA standard layers with annotations including labels, area totals, objects dimensions, etc.(Advanced Drawing Package and SightPlan 3D Premium only)
- Lidar point cloud data of all drafted floors (DXF)



Exterior Elevation Add-on

- Drafted exterior elevation drawings (DWG)
- Includes front, rear and side views of building facade(s)

Roof Plan Add-on

- Drafted roof plan (DWG)
- Includes slopes and roof edges of primary structure



Reflected Ceiling Plan Add-on

- Drafted reflected ceiling plan (DWG)
- Includes ceiling elements such as bulkheads, lighting locations and ceiling height indicators

3D Model Add-on

- 3D model (RVT or DWG)
- Includes walls, doors, windows and basic structural elements

